



**Pennsylvania Forensic Associates** employs a cognitive behavioral model of sexual and violent offender treatment that is based on the belief that sexual offenses and violence are self-reinforcing criminal behaviors. Our treatment therefore, employs a firm therapeutically challenging approach, with personal responsibility and accountability clearly established as treatment keystones.

PENNSYLVANIA  
**FORENSIC**  
ASSOCIATES

## ADULT SEXUAL OFFENDER TREATMENT

Pennsylvania Forensic Associates is approved by the Pennsylvania Sexual Offenders Board to provide treatment services for sexually violent predators.

While challenging the cognitive distortions leading to sexual criminal behavior, Pennsylvania Forensic Associates assists in monitoring and leading the offenders recovery within the community while reducing the risk of re-offending. This is accomplished through group, individual and family sessions.

Pennsylvania Forensic Associates provides an extensive assessment protocol in order to prevent sexual victimization. Pennsylvania Forensic Associates also participates in the Department of Corrections Reintegration Grant.

*Our therapeutic assessments and protocols include:*

- *Psycho-Sexual Assessment*
- *Sexual Biographical Assessment*
- *Clinical Polygraphing*
- *Risk Assessment*
- *Individual, Group, and Family Therapy*

## VIOLENCE PREVENTION PROGRAM

Pennsylvania Forensic Associates Violence Prevention Program provides treatment to both domestic and general violence offenders. The use of violence is a criminal activity and a learned behavior; therefore, it is a behavior that can be modified. Upon intake, the offender will receive an extensive assessment which will be used in the development of a treatment plan, should treatment be recommended.

The core treatment method used is Group Therapy; however, individual and family (when appropriate) treatment sessions are also employed in exploring personal issues and in the development of Relapse Prevention planning. Pennsylvania Forensic Associates also participates in the Department of Corrections Reintegration Grant.

## JUVENILE SEXUAL OFFENDER TREATMENT

Early intervention is essential to successful treatment and prevention of future sexual offenses, therefore, Pennsylvania Forensic Associates offers a full continuum of effective and cost efficient juvenile offender services.

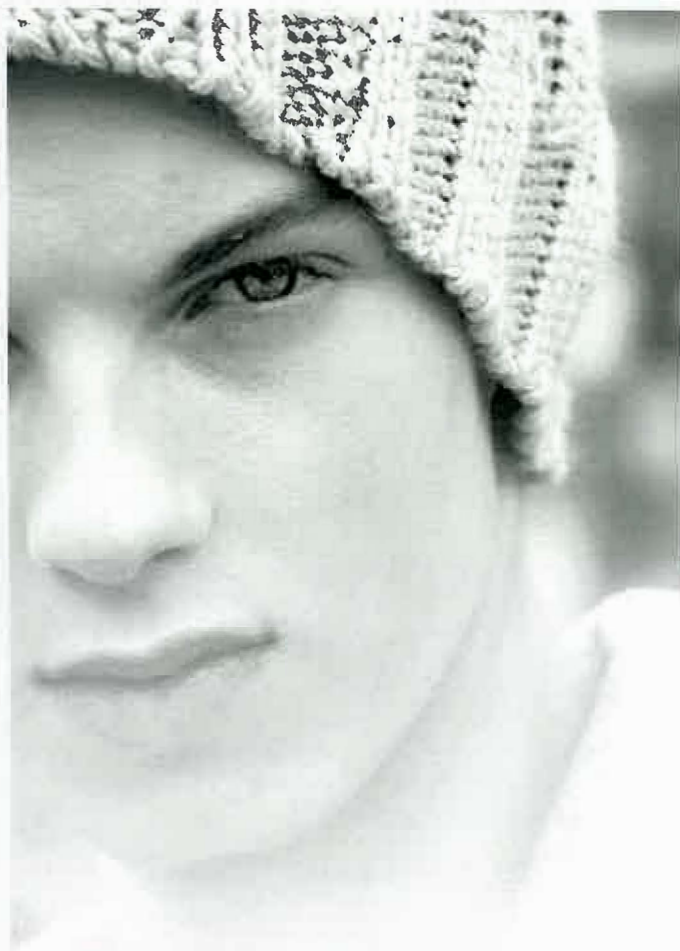
- *Psycho-Sexual Assessment and Evaluation*
- *Outpatient, Individual, Group, and Family Counseling*
- *SafeGuards Specialized Foster Care*

## JUVENILE DIAGNOSTIC PROGRAM

The Juvenile Diagnostic Program is located at the Northampton County Juvenile Justice Center and is designed to provide state-of-the-art services for adolescents charged with various forms of delinquent behavior, including; violence, firesetting, drug and alcohol issues, sex offending, and other forms of delinquency or mental health issues.

The program provides:

- *A secure setting in which diagnostic testing may be administered over a period of 30 days.*
- *Clients will be monitored by staff 24 hours a day, 7 days a week.*
- *The program is open to male adjudicated delinquents from 12-18 years of age.*
- *Testing includes: Clinical Interview, Personality Testing, Intelligence Testing and Actuarial Risk Assessments.*
- *Admission is based on safety considerations for the individual requesting admission, as well as for those already participating in the program.*
- *After diagnostic assessment, clients can complete treatment programming on site.*



**REFERRALS**  
**610.372.7960**

PENNSYLVANIA  
**FORENSIC**  
ASSOCIATES

### **READING OFFICE (MAIN)**

220 N. Fifth St. | Reading PA 19601  
P: 610.372.7960 | F: 610.372.8807

### **BETHLEHEM OFFICE**

2454 Brodhead Rd. | Bethlehem PA 18020  
P: 610.997.0123 | F: 610.997.7611

**PENNFA.COM**